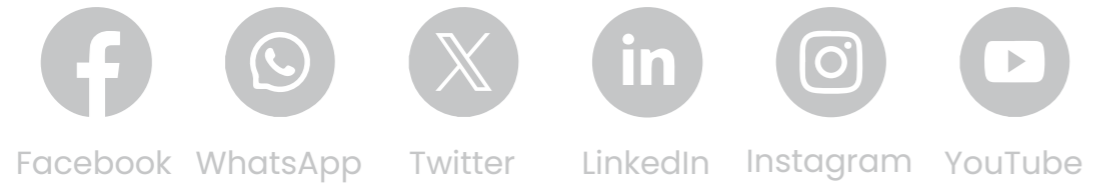


@V.2025.9  
We reserve the right to change specifications without prior notice.



Global Offices  
Distributors



### Infitek Co., Ltd.

TEL: +86-531-88982330  
FAX: +86-531-88983691  
Website: infitek.com  
Email: info@infitek.com  
Service: support@infitek.com  
Address: Room 201A, Building 9 (Block B), No. 2679,  
Hechuan Road, Minhang District, Shanghai,P.C.201100

### Infitek Inc.

522w Riverside Ave Ste N, Spokane, wa 99201  
Email: Info@infitek.com



# Infitek

## GAS CHROMATOGRAPH

GC-900A  
GC-906

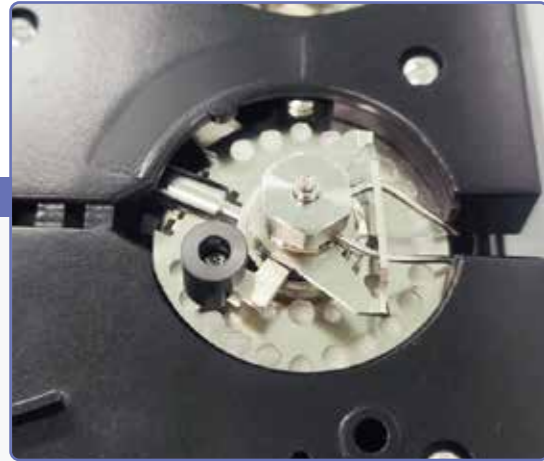


Laboratory and Medical equipment  
one-stop solution provider

INFITEK CO., LTD.

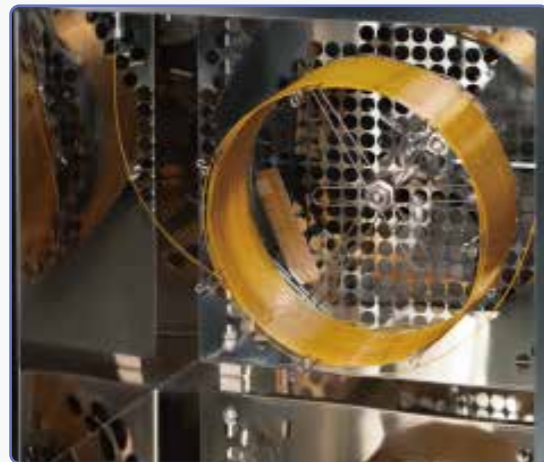
# Gas Chromatograph

GC-900A GC-906



## Multiple inlet types, Quick-disconnect support

●The system offers compatibility with key inlets (e.g., split/splitless, packed), full software control of the liquid autosampler for single and sequence injection, and supports various techniques including valve, headspace, and thermal desorption injection.



## High-capacity oven design

●Featuring a large oven with advanced heating for fast, uniform temperature control of columns and flow paths, this system ensures high stability and accuracy.



●Automated sampling system with high precision



●Large screen with user-friendly intelligent control

●Real-time monitoring of instrument status and critical component usage.



●Multiple detector options available

●Featuring a modular design, the system supports various detectors (e.g., FID, TCD) and offers wide dynamic range, high sensitivity/precision/ stability, and intelligent automation.

## Compatible Products & Accessories



### ALS-24 Automatic Liquid Sampler

Smart Guided Operation with step-by-step prompts.  
Enhanced Stability from encoder real-time feedback.  
Multi-Mode I/O for cross-vendor GC compatibility.  
Full Automation supporting 24/7 unattended operation.



### HGZ-300 Hydrogen Generator

#### Operation & Display:

Start gas production simply by turning on the power.

Stable output pressure with flow rate clearly shown on an LED digital display.

#### Maintenance & Usage:

Routine maintenance only requires adding distilled water.

Supports both continuous and intermittent operation.

#### Design & Safety:

Integrated design combining solution storage, electrolysis, and oxygen venting.

Low cell temperature ensures long service life.

Built-in anti-backflow device reliably prevents liquid return.



### AHS-16 Headspace Autosampler

An automatic headspace sampler is a sample preparation device for gas chromatography. It is a preferred method due to its simple operation, high efficiency, and superior reproducibility compared to alternatives like solvent extraction or thermal desorption.



### GA-2009 Compressed Air Generator

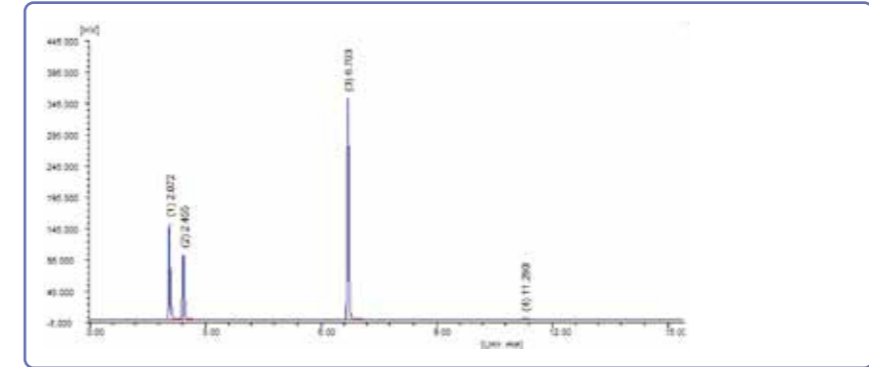
Deliver stable output pressure, low operating noise, and superior purification performance, making it an ideal alternative to high-pressure air cylinders. It is compatible with various domestic and imported gas chromatographs and can supply air for analytical laboratories. Additionally, it serves as a high-quality air source for high-purity nitrogen generators.

Specification

Model		GC-900A	GC-906	
Host	Pressure/Flow Control	Mechanical control	Supports up to 18 channels of electronic pressure/flow control (EPC)	
	Pressure Control Accuracy	/	0.001psi	
	Number of sample ports supported	3	3	
	Maximum number of detectors supported	4	4	
	Temperature Control System	8-channel independent temperature control system	8-channel independent temperature control system	
	Smart Maintenance Tracking and Reminders	No	yes	
Column oven	Control temperature	Room temperature+5 C ~450 C	Room temperature+2 C ~ 450 C	
	Minimum step value	0.01 C	0.01 C	
	Maximum heating rate	120 C/min	≥250C/min	
	Cooling time	From 450°C to 50°C in <5 minutes	From 450°C to 50°C in <3.2 minutes	
	Programmed Temperature Ramp	≥20 steps	≥99 steps 100 Platform	
	Temperature Stability	Ambient temperature ±1°C, column oven temperature variation <0.01°C	Ambient temperature ±1°C, column oven temperature variation <0.01°C	
Injection System	Injection type	Compatible with split/splitless capillary injectors, septum purging packed column injectors, cold column head injectors, programmable temperature vaporization injection ports, valve injection systems, headspace injection systems, thermal desorption injection systems, etc.		
	Maximum operating temperature	450 C	450 C	
	Programmatic current increase	≥ 20 steps	≥ 10 steps	
Detector	Hydrogen Flame Ionization Detector (FID)	Maximum operating temperature	450 C	
		Detection limit	≤4.3 pg C/s ( n-hexadecane )	≤1.1pg C/s ( n-hexadecane )
		Baseline drift (30 min)	≤2×10 <sup>-13</sup> A	
		Baseline noise	≤2×10 <sup>-14</sup> A	
		Dynamic Linear Range	≥10 <sup>7</sup>	
	Thermal Conductivity Detector (TCD)	Function	Auto-ignition function	
		Sensitivity	≥8000mV.mL/mg	≥12000mV.mL/mg
		Baseline drift (30 min)	≤0.2mV	
		Baseline noise	≤0.05mV	
	Flame Photometric Detector (FPD)	Dynamic Linear Range	≥10 <sup>5</sup>	
		Function	Air Gap Flow Protection Function	
		Maximum operating temperature	/	450 C
	Electron Capture Detector (ECD)	Detection limit	/	P≤80fg/s(Methyl parathion) / S≤8pg/s (Methyl parathion)
		Dynamic Linear Range	/	P≥10 <sup>3</sup> ; S≥10 <sup>2</sup>
		Function	/	Auto-ignition function
Nitrogen-Phosphorus Detector (NPD)	radioactive source	/	63Ni	
	Maximum operating temperature	/	400 C	
	Detection limit	/	≤1.0×10 <sup>-14</sup> g/mL ( γ -666)	
Nitrogen-Phosphorus Detector (NPD)	Dynamic Linear Range	/	≥10 <sup>4</sup>	
	Maximum operating temperature	/	400 C	
	Detection limit	/	N: ≤1×10 <sup>-12</sup> g(N)/s(Azonaphthalene) P: ≤5×10 <sup>-13</sup> g(P)/s(Malathion)	
Nitrogen-Phosphorus Detector (NPD)	Dynamic Linear Range	/	N≥10 <sup>3</sup> 、 P≥10 <sup>3</sup>	

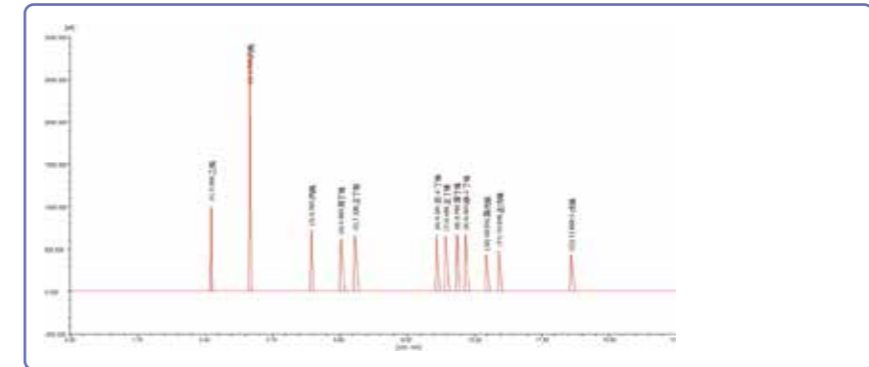
Application

Natural gas sulfide analysis

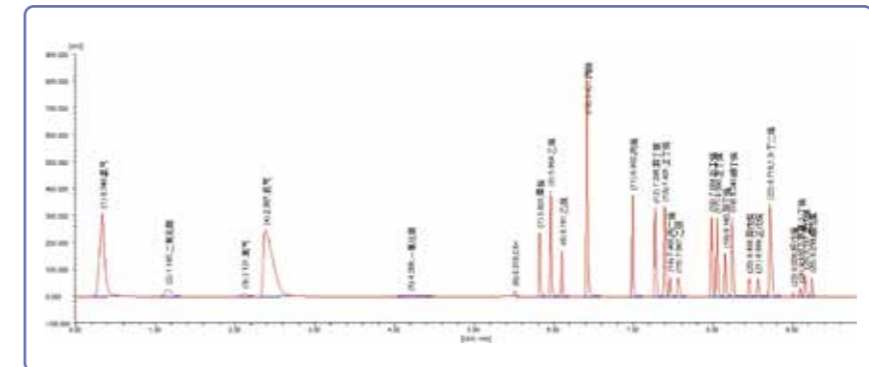


1.Hydrogen sulfide, 2.Carbonyl sulfur, 3. Carbon disulfide, 4. Thiophene

Analysis of liquefied petroleum gas



Rapid Refinery Gas Analysis



Refinery flue gas analysis

